

## Generation of neutral atomic beams utilizing photodetachment by high power diode laser stacks

A. P. O'Connor, F. Grussie, H. Bruhns, N. de Ruelle, T. P. Koenning, K. A. Miller, D. W. Savin, J. Stützel, X. Urbain, and H. Kreckel

Citation: [Review of Scientific Instruments](#) **86**, 113306 (2015); doi: 10.1063/1.4934873

View online: <http://dx.doi.org/10.1063/1.4934873>

View Table of Contents: <http://scitation.aip.org/content/aip/journal/rsi/86/11?ver=pdfcov>

Published by the [AIP Publishing](#)

---



# Generation of neutral atomic beams utilizing photodetachment by high power diode laser stacks

A. P. O'Connor,<sup>1,a)</sup> F. Grussie,<sup>1</sup> H. Bruhns,<sup>2,b)</sup> N. de Ruelle,<sup>2,c)</sup> T. P. Koenning,<sup>3</sup> K. A. Miller,<sup>2</sup> D. W. Savin,<sup>2</sup> J. Stützel,<sup>2</sup> X. Urbain,<sup>4</sup> and H. Kreckel<sup>1</sup>

<sup>1</sup>Max-Planck-Institut für Kernphysik, 69117 Heidelberg, Germany

<sup>2</sup>Columbia Astrophysics Laboratory, Columbia University, New York, New York 10027, USA

<sup>3</sup>Dilas Diode Laser, Inc., Tucson, Arizona 85715, USA

<sup>4</sup>Institute of Condensed Matter and Nanosciences, Université Catholique de Louvain, Louvain-la-Neuve B-1348, Belgium

(Received 25 August 2015; accepted 19 October 2015; published online 24 November 2015)

We demonstrate the use of high power diode laser stacks to photodetach fast hydrogen and carbon anions and produce ground term neutral atomic beams. We achieve photodetachment efficiencies of  $\sim 7.4\%$  for  $H^-$  at a beam energy of 10 keV and  $\sim 3.7\%$  for  $C^-$  at 28 keV. The diode laser systems used here operate at 975 nm and 808 nm, respectively, and provide high continuous power levels of up to 2 kW, without the need of additional enhancements like optical cavities. The alignment of the beams is straightforward and operation at constant power levels is very stable, while maintenance is minimal. We present a dedicated photodetachment setup that is suitable to efficiently neutralize the majority of stable negative ions in the periodic table. © 2015 AIP Publishing LLC. [<http://dx.doi.org/10.1063/1.4934873>]

## I. INTRODUCTION

Interactions of neutral atomic species with other atoms, molecules, and solids are of fundamental interest in many branches of physics research. For example, while none of the natural elements occur in atomic form under normal terrestrial conditions (except for the rare gases and mercury), neutral atoms are routinely observed in space. In interstellar clouds, neutral species like H, D, C, and O are abundant<sup>1</sup> and their reactions with ions and neutrals contribute to the build-up of complex molecules in space and thus remain an active field of research.<sup>2</sup> Different experimental techniques have been pursued to study ion-neutral<sup>3</sup> and neutral-neutral<sup>4,5</sup> collisions. Often experiments with neutral atoms are carried out in flow tubes, where neutral H and N atoms can be created in microwave discharges, while O atoms are prepared by exchange reactions with nitrogen.<sup>3</sup> The neutral species in these measurements are, however, embedded in the gas flow and not freely available for other applications or experiments. Experimental data on reactions involving neutral carbon atoms are extremely rare, mainly due to the difficulties of creating neutral C beams (a brief overview can be found in Ref. 6). The method presented here overcomes these difficulties and thus facilitates detailed cross section and rate coefficient measurements with neutral C atoms.<sup>6</sup>

For many technical applications, the generation of well-defined neutral atomic beams is also highly desirable. For example, the use of atomic hydrogen is an established method for substrate cleaning in semiconductor research.<sup>7</sup> In nuclear

fusion devices, hydrogen or deuterium beams can be used for plasma heating and control, as neutral particles can enter the plasma without being deflected by the strong magnetic fields. For the ITER project, it is foreseen that neutral beams will inject up to 50 MW of power into the fusion plasma.<sup>8</sup> For this application, the creation of intense neutral beams by stripping of  $H^-$  or  $D^-$  in gas cells has been explored; however, the efficiency of this approach is limited and the pumping needs of large scale gas cells may lead to prohibitive power consumption levels.<sup>9</sup> An alternative path of neutralization would be the use of intense laser light.<sup>10</sup> Recent design studies for ITER are based on the use of Nd:YAG lasers combined with highly reflective cavities. However, it has been recognized that the technical difficulties in maintaining the beam quality and mirror reflectivities under harsh conditions would be immense.<sup>9</sup>

Neutralization of negative hydrogen beams by intense laser fields has been demonstrated before,<sup>11–13</sup> and it has been used extensively at Oak Ridge National Laboratory to study interactions between highly charged ions and atomic hydrogen (see, e.g., Refs. 14 and 15). In these experiments, the negative hydrogen beam traverses the inner cavity of a Nd:YAG laser, which is used for photodetachment (PD). As the fundamental wavelength of Nd:YAG lasers lies at 1064 nm, the photon energy is sufficient to photodetach  $H^-$  and  $D^-$ , but it is below the photodetachment threshold for  $C^-$  and  $O^-$ . One advantage of cavity configurations is that they can be Q-switched to produce neutral beam pulses with pulse lengths on the order of nano-seconds, whereas diode systems are often limited to a minimum pulse length of a few micro-seconds.

Here, we demonstrate the generation of neutral atomic beams utilizing diode laser stacks to photodetach negative ions. Diode laser stacks are robust and require little maintenance. They provide high power levels without using enhancement

<sup>a)</sup>aodh.oconnor@mpi-hd.mpg.de

<sup>b)</sup>Present address: Inficon GmbH, Bonner Str. 498, 50968 Köln, Germany.

<sup>c)</sup>Present address: Department of Physics, Stockholm University, SE-106 91 Stockholm, Sweden.

methods such as optical cavities. Therefore, some of the more stringent requirements, that the use of optical cavities imposes on the operating conditions, can be avoided, and long-term stability is greatly improved.

## II. THE PHOTODETACHMENT PROCESS

### A. Basic considerations

Photodetachment studies have been the main source of information on the electron affinities and the structure of negative ions; and the results have been collected in several reviews.<sup>16,17</sup> While an in-depth discussion of the photodetachment process is beyond the scope of the present publication, here, we give a brief overview of those aspects that are relevant for the creation of atomic neutral beams.

The outermost electron of a negative atomic ion is bound to the neutral host atom by polarization forces. These are weak compared to the  $1/r$  Coulomb potential that binds the inner electrons. Therefore, most atomic negative ions have only a single bound state, and electron affinities (corresponding to the binding energy of the outer electron) are generally about an order of magnitude lower than the first ionization potential of the host atom. Single-photon electron detachment of a ground state negative ion becomes possible when the energy of an individual photon  $h\nu$  exceeds the electron affinity  $E_{EA}$  (here,  $h$  is Planck's constant and  $\nu$  is the frequency of the photon). At photon energies close to the threshold  $E_{th}$ , the cross section  $\sigma_{PD}$  is usually described by the Wigner threshold law,<sup>18</sup>

$$\sigma_{PD} = (h\nu - E_{th})^{\ell+1/2}, \quad (1)$$

where  $\ell$  is the angular momentum of the detached electron. Angular momentum is conserved during the detachment process and the behavior of the cross section at threshold is dominated by the angular momentum of the departing electron, where  $\ell = 0$  corresponds to an  $s$ -wave,  $\ell = 1$  corresponds to a  $p$ -wave, etc. When more than one partial wave is permitted by the selection rules, the lower  $\ell$ -value typically dominates in the vicinity of the threshold. At higher photon energies, detachment into excited states of the neutral atom may become possible, resulting in the opening of additional photodetachment channels.

Some negative ions possess excited states, which have a lower electron detachment threshold. However, it is difficult to use these for the production of stable neutral beams, as standard negative ion sources typically yield only a very small fraction of ions in metastable levels (see, e.g., Refs. 19 and 20 for the case of metastable  $C^-$ ).

Table I lists the electron affinities, electronic states, and threshold wavelengths for those elements in the first three rows of the periodic table that form stable negative ions. The electron affinities range from 0 to 3.6 eV, with chlorine being the most electronegative element in the periodic table. It is interesting to compare these values to the wavelength of high power diode laser stacks. In this work, we present data taken with two different laser systems at 975 nm and 808 nm, respectively. Cost-effective solutions for high power diode stacks at wavelengths shorter than 800 nm (corresponding to  $h\nu \geq 1.55$  eV) are currently not commercially available,

TABLE I. Table of electron affinities ( $E_{EA}$ ), negative ion electronic states, and threshold photodetachment wavelengths ( $\lambda_{th}$ ) of all elements in the first three rows of the periodic table that form stable negative ions.<sup>16</sup> Electron affinities of metastable states are given in parentheses.

	$E_{EA}$ (eV)	Negative ion state	$\lambda_{th}$ (nm)
H	0.754	$1s^2^1S_0$	1643
Li	0.618	$2s^2^1S_0$	2006
B	0.290	$2p^2^3P_0$	4275
C	1.262 (0.033)	$2p^3^4S_{3/2}$ $2p^3^2D_{5/2,3/2}$	982 37571
O	1.461	$2p^5^2P_{3/2}$	848
F	3.401	$2p^6^1S_0$	364
Na	0.548	$3s^2^1S_0$	2262
Al	0.432 (0.109)	$3p^2^3P_0$ $3p^2^1D_2$	3484 11375
Si	1.390 (0.527) (0.029)	$3p^3^4S_{3/2}$ $3p^3^2D_{3/2}$ $3p^3^2P_{1/2}$	892 2353 42753
P	0.747	$3p^4^3P_2$	1660
S	2.077	$3p^5^2P_{3/2}$	597
Cl	3.613	$3p^6^1S_0$	343

although promising new materials that can generate laser light at 766 nm and 793 nm are under development. Considering all elements in the periodic table up to  $Z = 86$ , most can form stable negative ions, of which only 12 elements have known or predicted<sup>21</sup> electron affinities  $> 1.55$  eV. That means that high power diodes can be used to neutralize the majority of stable negative atomic ions.

The absolute photodetachment cross sections for negative ions of hydrogen, carbon, and oxygen are shown in Fig. 1 and compared to the laser wavelengths that were used in the present work. These elements represent three of the four most

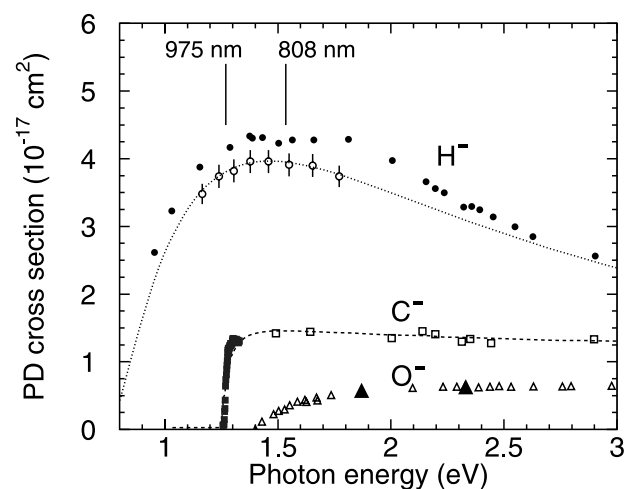


FIG. 1. Measured photodetachment (PD) cross sections for  $H^-$  (solid circles<sup>22</sup> and open circles<sup>23</sup>),  $C^-$  (squares), and  $O^-$  anions (triangles). The dotted line shows the calculated  $H^-$  cross section taken from Ref. 24. The solid squares are relative experimental data for  $C^-$ <sup>25</sup> that have been scaled to roughly match the absolute data depicted by the open squares and the threshold fit depicted by the dashed line, which were both taken from Ref. 26. The  $O^-$  data shown by open triangles are taken from Ref. 27, the two large solid triangles depict recent measurements taken from Ref. 28. The vertical solid lines represent the laser wavelengths used in the present study.

abundant elements in the universe (the fourth is helium, which forms only metastable anions). Hydrogen, carbon, and oxygen are thus of paramount importance for astrophysical studies. The hydrogen cross section shows a very broad maximum, such that any photon energy between 1.2 eV and 2.0 eV is suitable. The cross sections for  $C^-$  and  $O^-$  show the expected simple threshold behavior and the exact laser wavelength is rather uncritical, as long as the photon energy is above the threshold.

## B. Crossed- and inclined-beams photodetachment

The photodetachment probability  $\eta$  for an anion passing through a laser field depends on the product of the wavelength-dependent cross section  $\sigma_{PD}$  and the photon flux  $\Phi$ , integrated over the interaction time  $t$ ,

$$\eta = 1 - \exp \int_{-\infty}^{+\infty} -\sigma_{PD}\Phi(t)dt. \quad (2)$$

Here, we consider two simple, illustrative cases in order to derive the relevant parameters determining the photodetachment efficiency for a collimated anion beam.

First, let us assume that the ion beam (travelling in the  $x$ -direction in a Cartesian coordinate system) is crossed at an angle of  $90^\circ$  in the  $x$ - $z$ -plane, by a laser beam that is larger in diameter (Fig. 2). If the ions travel at constant velocity and both beams are continuous, then the situation is stationary, and instead of integrating over the interaction time, we can use the  $x$ -coordinate, giving

$$\eta(y, z) = 1 - \exp \left[ -\frac{\sigma_{PD}}{v_{ion}} \int_{-\infty}^{+\infty} \Phi(x, y, z) dx \right], \quad (3)$$

where  $v_{ion}$  is the ion beam velocity. Now we assume that the laser beam propagates in the  $z$ -direction and has a Gaussian profile with a diameter  $2w$  (corresponding to the size of the beam at which the irradiance drops to  $1/e^2$  with respect to the value on the propagation axis). The photon flux in this case can be parametrized by

$$\Phi(x, y) = \frac{2P}{h\nu\pi w^2} \exp \left[ -\frac{2(x^2 + y^2)}{w^2} \right], \quad (4)$$

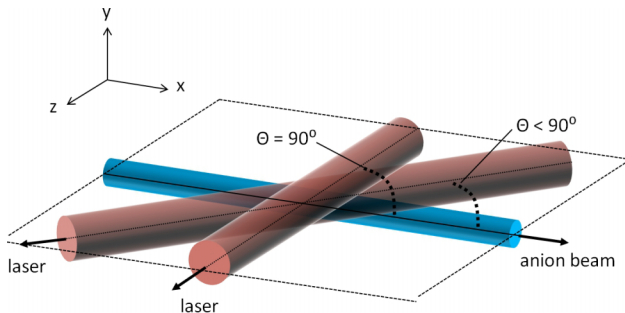


FIG. 2. Photodetachment of an anion beam traveling in  $x$ -direction with a crossed ( $\Theta = 90^\circ$ ) or inclined ( $\Theta < 90^\circ$ ) laser beam.

where  $P$  stands for the laser power. Solving the integral, given by Eq. (3), yields

$$\eta^{\text{crossed}}(y) = 1 - \exp \left[ -\sqrt{\frac{2}{\pi}} \frac{\sigma_{PD}}{v_{ion}} \frac{P}{h\nu w} \exp \left( -\frac{2y^2}{w^2} \right) \right]. \quad (5)$$

To simplify matters further, we can assume that we are operating below the saturation regime and use only the leading orders of the series expansion for the first exponential ( $e^x = 1 + x + \dots$ ), resulting in

$$\eta^{\text{crossed}}(y) \approx \sqrt{\frac{2}{\pi}} \frac{\sigma_{PD}}{v_{ion}} \frac{P}{h\nu w} \exp \left( -\frac{2y^2}{w^2} \right). \quad (6)$$

This expression must be averaged over the ion beam profile along the  $y$  direction (perpendicular to the intersection plane) in order to obtain the full detachment efficiency. The total efficiency is thus inversely proportional to the laser beam width (and not to the square of it, as one could guess from the corresponding increase of the irradiance), provided that the anion beam is contained within the vertical profile of the laser beam. In order to optimize the global neutralization efficiency for a given ion beam size and velocity, it is advisable to adjust the vertical laser beam size to roughly match the size of the ion beam. If a good match can be achieved, then, other than the laser power and frequency, Eq. (6) leaves little room for optimization. However, one has to keep in mind that in our derivation so far we have assumed right angles between both beams.

If we introduce as a second case an angle  $\Theta < 90^\circ$  (Fig. 2), the effective overlap length increases by a factor  $1/\sin\Theta$  (assuming that the laser beam profile is constant along the overlap region), resulting in a larger photodetachment efficiency

$$\eta^{\text{inclined}}(y) \approx \frac{1}{\sin\Theta} \sqrt{\frac{2}{\pi}} \frac{\sigma_{PD}}{v_{ion}} \frac{P}{h\nu w} \exp \left( -\frac{2y^2}{w^2} \right). \quad (7)$$

We will not consider the extreme case of collinear beams ( $\Theta = 0$ ) here, as it is important for our purposes to be able to separate the neutral beam from the laser.

In practice, one needs to know the overlapping densities of both beams at each position in the interaction region for precise calculations of the photodetachment efficiency. In Sec. IV, we will present both numerical simulations based on the individual beam densities, as well as simplified calculations using the above formalism. We will compare the results with experimental photodetachment efficiencies to extract the relevant parameters and highlight the potential of neutral beam creation using diode laser stacks.

## III. EXPERIMENTAL SETUP

### A. Laser systems

For our photodetachment studies, we used two DILAS (Diode Laser, Inc.) direct diode laser systems that were custom-built for this purpose. The lasers operate in fixed wavelength bands at  $975 \pm 5$  nm and  $808 \pm 3$  nm, where we have given each band center and full width at half maximum (FWHM). A schematic of one of the laser heads is shown in Fig. 3. Each

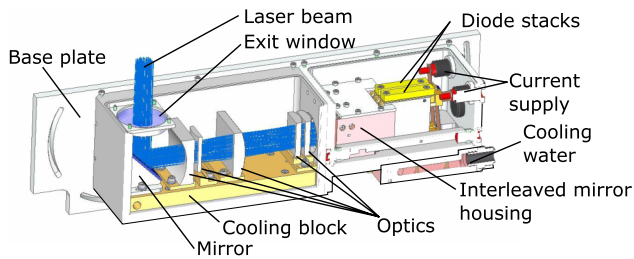


FIG. 3. Schematic of the internal layout of the DILAS 808-nm-laser head, capable of delivering 2 kW of continuous wave power.

laser is composed of two water-cooled, vertically stacked diode bar arrays.

The 975-nm-laser system was used to neutralize  $H^-$ . The laser is capable of delivering up to 1.4 kW of continuous wave (CW) laser power from the two stacks, each of which consists of 12 diode bars. Each diode bar has a thickness (pitch) of 1.8 mm and holds 19 individual emitters. Micro-optical lenses are used to collimate the highly divergent individual beamlets in both axes. Both stacks are optically combined by a set of refractive elements, creating a single combined beam (“interleaved stack”) with a pitch of 0.9 mm. The beam is then further shaped and focused by a series of standard optical elements. This arrangement results in a rectangular matrix of  $19 \times 24$  individual beamlets at the laser output window. The optics are chosen such that the combined beamlets come to a focus  $\sim 1.1$  m downstream of the laser exit.

The newer 808-nm-laser system was used for  $C^-$  photodetachment. The laser delivers up to 2.0 kW of CW power from two arrays with 15 diode bars each. The increased number of bars results in a slightly larger initial profile for the combined beam, compared to the 975-nm-laser, but other than that the interleaved optics and the beam geometry are very similar.

Direct diode laser arrays are a very compact and reliable means to achieve high power densities. Electro-optical power conversion ratios of 60%–65% can be reached under optimal conditions for state-of-the-art material. Such high efficiencies make these laser systems particularly attractive for industrial applications where low power consumption is relevant. The 808-nm-system used in the present work achieved a conversion ratio of 45% under typical operating conditions.

Furthermore, diode arrays often run maintenance-free for more than 10 000 h.<sup>29</sup> In the present study, the laser stacks were driven by power supplies manufactured by Amtron GmbH. Currents up to 100 A and voltages of  $\sim 40$  V were used. The Amtron power supplies allow for fast switching of the laser beam, with rise and fall times on the order of 20  $\mu s$ . Operating conditions ranging from CW to pulsed operation at frequencies up to 1 kHz have been tested.

## B. Laser beam characteristics

The diode laser stacks consist of an array of collimated laser diodes that can be modelled as an incoherent bundle of super-Gaussian beams (for specifics on diode laser characteristics and Gaussian beam propagation, see, e.g., Ref. 30). Specifically, while rays associated with the propagation direction of the individual beamlets obey the laws of geometrical optics,

the beamlet profiles are obeying the laws of Gaussian optics (with the appropriate Gaussian beam quality factor  $M^2$ <sup>30</sup>). This explains how the beam appears box-like in the near field and Gaussian-like near and beyond the focus. The global waist is a compromise between the geometrical focus and the diffractive propagation of the individual beamlets.

We measured the horizontal and vertical profiles of the 808-nm-laser as a function of distance from the laser exit window, using the scanning knife edge technique.<sup>31</sup> Figure 4 shows the measured profiles at a selection of distances  $z_{\text{laser}}$  from the laser head. At  $z_{\text{laser}} = 63$  mm, the vertical profile lines are a diffuse image of the laser diode bars, which are focused by a series of lenses to an asymmetric spot of approximately  $5 \text{ mm} \times 10 \text{ mm}$  at  $z_{\text{laser}} = 1162$  mm. This focal length has been chosen to match the geometry of our photodetachment chamber (see Sec. III C). As for most diode lasers, the divergence of the individual beamlets differs strongly in  $x_{\text{laser}}$  and  $y_{\text{laser}}$  directions (often referred to as the fast- and slow axes, respectively). The individual microlenses cannot fully compensate for this effect, and therefore, the laser beam is not collimated and its beam quality is poor compared to typical single-emitter laser systems. However, since the most important parameter for our purposes is the power density and the overall vertical beam waist at the focus point, the limited beam quality is not a major concern. Of more practical impact is the development of side beams at high output power. These side lobes result from subtle changes in the emission profiles of the individual diodes that can occur when the cooling efficiency enters a critical

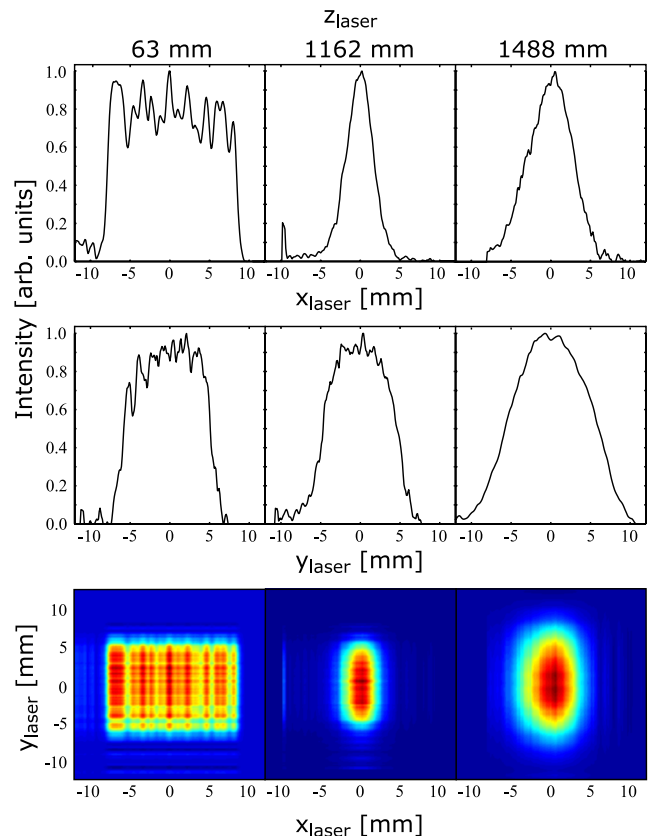


FIG. 4. 808-nm-laser profiles measured at three distances  $z_{\text{laser}}$  from the laser exit window. The profiles were measured just above the laser diode threshold current of  $\sim 10$  A.

regime. At high operating current, the divergence increases and overfills the slow axis collimating optics. In this case, some of the emitted light can miss the microlens and end up outside the nominal beam. For our laser systems, up to 15% of the laser power in CW operation at maximum power ended up in side lobes and was dissipated in the vacuum chamber instead of leaving through the exit vacuum viewport.

For simulations of the overall photodetachment efficiency, we needed a quantifiable measure of the dimension of the combined laser beam at different positions along the propagation axis. To this end, we fitted the measured horizontal and vertical laser profiles as an imperfect Gaussian beam according to<sup>30</sup>

$$w(z_{\text{laser}}) = w_0 \sqrt{1 + \left[ \frac{M^2 \lambda (z_{\text{laser}} - z_0)}{\pi w_0^2} \right]^2}, \quad (8)$$

where  $w(z_{\text{laser}})$  is the beam waist at position  $z_{\text{laser}}$ , for a beam with a Gaussian beam quality factor  $M^2$ , wavelength  $\lambda$ , focus location  $z_0$  with respect to the laser exit window, and minimum beam waist  $w_0$ . While this approximation is clearly not very good at the laser exit, it improves significantly close to the more interesting region of the global beam focus. We assumed independent diffractive propagation in the vertical and horizontal directions, which we denote  $x_{\text{laser}}$  and  $y_{\text{laser}}$ , respectively, in the reference frame of the laser. In Fig. 5, the measured beam radius along the propagation axis is plotted for the 808-nm-laser, together with a fit using Eq. (8). The fair agreement shows that the overall propagation of the combined beamlets can be approximated by a single Gaussian beam with a large quality correction factor of  $M^2 \sim 100$ .

We did not carry out detailed profile measurements for the 975-nm-laser system. Here, we had to rely on optical simulations performed using the ZEMAX optical design suite.<sup>32</sup> The results of the simulation in the vicinity of the laser focus at  $\sim 1.1$  m are shown in Fig. 6. The simulations did not take into account near field non-linearities that deform the laser

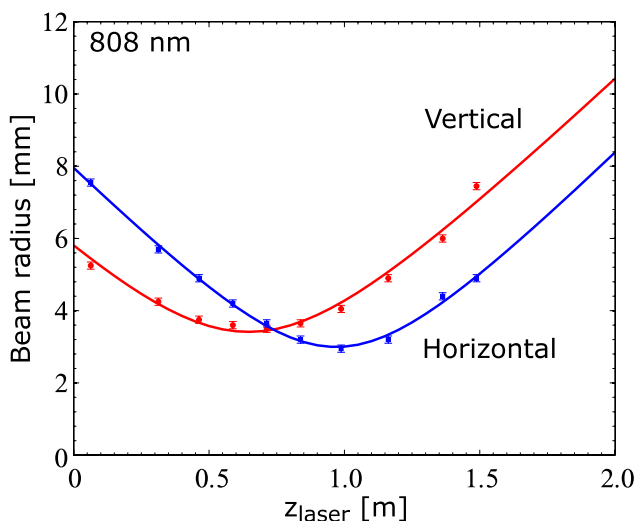


FIG. 5. Measured beam radius (90% transmission) of the 808-nm-laser system, as a function of distance from the laser exit window, in the vertical and horizontal planes. Distributions are fitted with Eq. (8), the resulting fits are denoted by the solid curves.

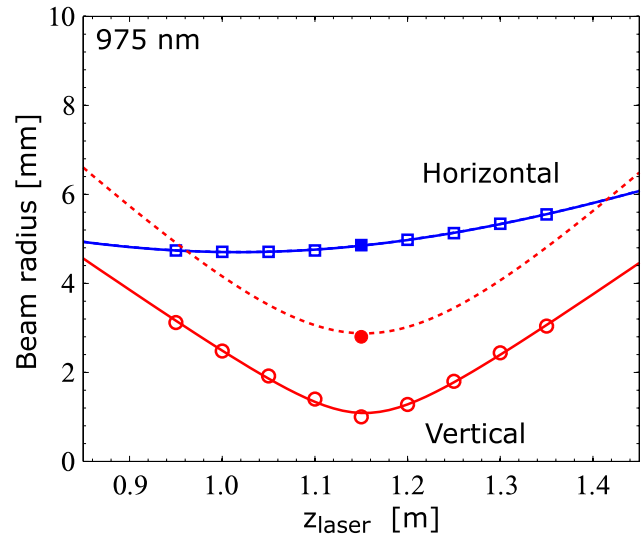


FIG. 6. Laser beam radius (90% transmission) for the 975-nm-laser as a function of distance from the laser head, in the vertical (circles) and horizontal plane (squares). Simulated profiles are denoted by hollow markers and the single measurement by the solid circle and solid square at  $z_{\text{laser}} = 1150$  mm. The simulated distributions were fitted using Eq. (8). The fit results are shown by the solid lines. The vertical profiles were then scaled to match the single measured profile in the focus (to account for beam broadening due to near-field non-linearities that are not included in the simulation), resulting in the dashed line.

beam along individual laser bars (resulting in the so-called “smile”<sup>33</sup>). For our laser system, these aberrations will result in a linear broadening of the vertical profiles for all distances. To account for the broadening caused by this effect, we compared the simulated profiles to a single measurement that was carried out at the laser beam focus. Then, we scaled the simulated vertical profiles up to match the measurement. The results of the fits, given as effective Gaussian beam parameters for both laser systems, are listed in Table II.

### C. Photodetachment chamber

The photodetachment chamber depicted in Fig. 7 was initially designed to facilitate efficient neutral beam creation for an ion-neutral merged-beams experiment.<sup>6,34,35</sup> At the present time, several versions of this chamber are in operation at Columbia University and the Max-Planck-Institut für Kernphysik (MPIK) in Heidelberg, Germany. Except for minor adaptations, the general features and dimensions remain unchanged.

The photodetachment takes place in an  $\sim 2$  m long vacuum chamber that consists of a central Conflat (CF) DN160 six-way cross and two straight sections with a length of  $\sim 80$  cm

TABLE II. Effective Gaussian beam parameters for both laser systems. The parameters have been derived using Eq. (8).

		$w_0$ (mm)	$M^2$	$z_0$ (m)
808 nm-laser	Horizontal	3.0	88	0.97
	Vertical	3.4	97	0.65
975 nm-laser	Horizontal	4.7	135	1.02
	Vertical	2.9	182	1.15

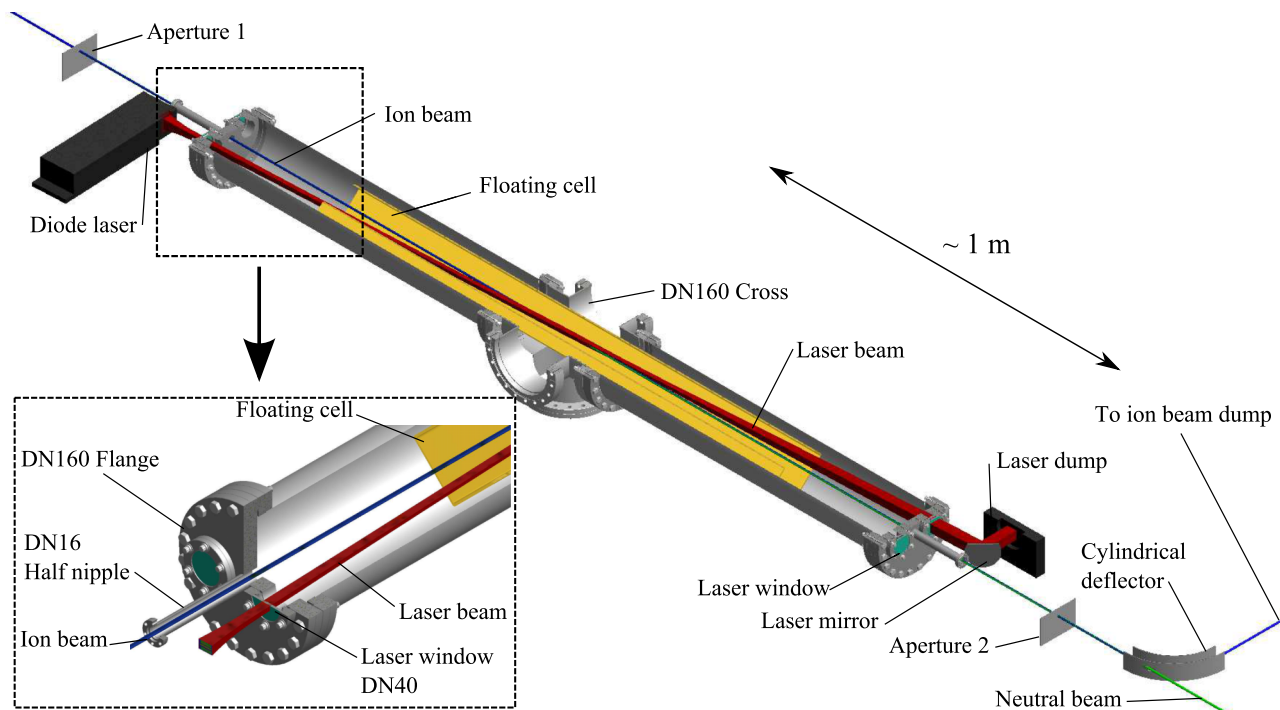


FIG. 7. Schematic overview of the photodetachment region.

each. Custom-built end flanges (see inset in Fig. 7) allow for the injection of the negative ion beam through small DN16 half nipples. The laser enters and exits the vacuum through DN40 windows and intersects the ion beam at a small angle of  $\Theta = 2.7^\circ$  in the central cross. The small intersection angle extends the overlap region and thereby boosts the photodetachment efficiency — which scales with  $1/\sin \Theta$  — by a factor of  $\sim 21$  (compared to a crossed-beam arrangement at right angles). Due to differences in the laser head geometry, only the 975-nm-laser head could be coupled directly into the photodetachment chamber, whereas the 808-nm-system required the inclusion of an angled mirror between the laser head and the vacuum entry window. This influenced the laser path length from the head to the central chamber. Path lengths from the exit window of the laser head to the middle of the photodetachment chamber of  $\sim 1.05$  m and  $\sim 1.20$  m were measured, for the 975- and 808-nm-lasers, respectively.

To collimate the ion and neutral beams, the photodetachment region is bounded by two circular apertures of 5 mm diameter that are separated by 280 cm (for the  $H^-$  measurements) or 307 cm (for the  $C^-$  measurements).

Behind the second aperture, the remaining ion beam can be separated from the neutrals using electric or magnetic fields. In our experimental setups, we have used both an electrostatic quadrupole and a simple cylindrical deflector (similar to that described by Kreckel *et al.*,<sup>36</sup> but with a hole in the rear plate). The current of the deflected ion beam is measured in a Faraday cup. The neutral particle flux is measured via calibrated secondary electron emission in a modified Faraday cup that features separate electrodes for neutral impact and for collection of the secondary electrons. The calibration method for the modified Faraday cup is described in detail in Ref. 6.

In order to fine-tune the neutral beam energy, we installed a floating cell with a length of  $\sim 1.4$  m in the photodetachment chamber. By applying a negative (positive) voltage to this electrode, the ions are decelerated (accelerated) at the entrance and accelerated (decelerated) back to their original kinetic energy at the exit of the cell. The neutrals that are created in the center of the floating cell, however, will remain at the lower (higher) kinetic energy and continue to fly ballistically. Hence, with the use of the floating cell, we can adjust the neutral beam energy without having to change the acceleration potential of the ion source or the ion beam optics.

#### D. Ion beam characteristics

For the present study, we have used  $H^-$  and  $C^-$  beams at 10 keV and 28 keV, respectively. While the  $H^-$  ion beam was produced in an off-axis duoplasmatron source, the  $C^-$  ions were extracted from a conventional sputter ion source. The ions were mass-selected by a Wien filter and then focused and guided into the photodetachment region by electrostatic ion optical elements. A right angle deflection was introduced between each ion source and the corresponding photodetachment chamber to prevent gas and neutralized atoms from the source region from making their way into the experimental section.

In the straight photodetachment chamber, two circular apertures are used to limit the beam emittance. For the  $H^-$  case, we can interpret the divergence angle and beam diameter permitted by the two 5 mm apertures at 280 cm distance as a maximum transmitted area in phase space of  $A = \pi\epsilon = 8.9$  mm mrad (where  $\epsilon$  stands for the beam emittance). For the  $C^-$  beam, the apertures were placed 307 cm apart, resulting in a slightly smaller phase space area of  $A = 8.1$  mm mrad. One should keep in mind, though, that these limits apply to

transmitted beams on an unperturbed ballistic trajectory. In reality, the ions are propagating under the influence of mutual space charge repulsion, while the neutrals are not subject to space charge effects. This leads to differences between the fraction of ions that were neutralized by the laser and the ratio of transmitted neutrals to transmitted ions. We will quantify these effects in Sec. IV. For  $H^-$  beams, we typically begin with beam currents in front of the photodetachment section on the order of  $\sim 5 \mu A$ . Approximately  $3.2 \mu A$  is transmitted through the first aperture of which only  $\sim 0.65 \mu A$  passes the second aperture. Similarly, for  $C^-$  beams, we measured  $1.8 \mu A$  in front of the first aperture, where  $\sim 1.0 \mu A$  and  $\sim 0.7 \mu A$  are transmitted through the first and second apertures, respectively.

These measured currents together with SIMION<sup>37</sup> simulations and the assumption of circular initial beams allowed us to reconstruct the ion beam waist in the middle of the photodetachment chamber. We compared the simulations with beam profile measurements using wire scanners that were positioned downstream of the photodetachment region and achieved very good agreement. For the  $H^-$  beam, we derived a Gaussian beam radius of 1.3 mm ( $1/e^2$ ) in the center of the photodetachment chamber, and for  $C^-$ , we derived 1.1 mm. These values were used in combination with the laser beam profiles to simulate the overall photodetachment efficiencies.

A background neutral atom flux can be stripped from the parent ion beam via collisions with the residual gas or scattering with the aperture surfaces. Such collisions can generate neutrals in highly excited Rydberg states which are undesirable in the study of astrophysical reactions. In our apparatus, the typical residual gas pressure was on the order of  $10^{-8}$  mbar, thus greatly minimizing the collisional stripping rate. Background neutral fluxes, stripped of the parent beam, were typically measured to be less than 1-3 nA (here, we use units of electric current for the neutral flux, assuming one electric charge per neutral atom, to make the neutral flux comparable to the ion currents), thus contributing  $\leq 5\%$  to the total neutral beam flux. To further circumvent any influence these excited atoms could have on subsequent measurements, a chopping scheme can be implemented in the acquisition scheme as discussed in Ref. 38.

#### IV. PHOTODETACHMENT EFFICIENCIES

The total photodetachment efficiency was calculated from Monte Carlo simulations based on the ion and laser beam profiles derived above (Secs. III B and III D) and compared to direct measurements of the ion and neutral signals. Our simulations incorporated the change in the horizontal and vertical distributions of both laser and ion beams within the overlap region. Ions were flown at their nominal kinetic energy, starting from a plane upstream of the first aperture. The individual transversal positions and velocity angles were distributed according to a Gaussian ion beam distribution with a 10 eV FWHM energy spread, which is common for the ion sources used here.<sup>39-41</sup> Typical simulations consisted of flying 10 000 ions over a photon-field divided into cells with a volume of  $640 \times 30 \times 30 \mu m^3$  each. The photon flux in each cell was derived from the measured laser profiles. For each individual trajectory, the averaged photon flux and flight time through

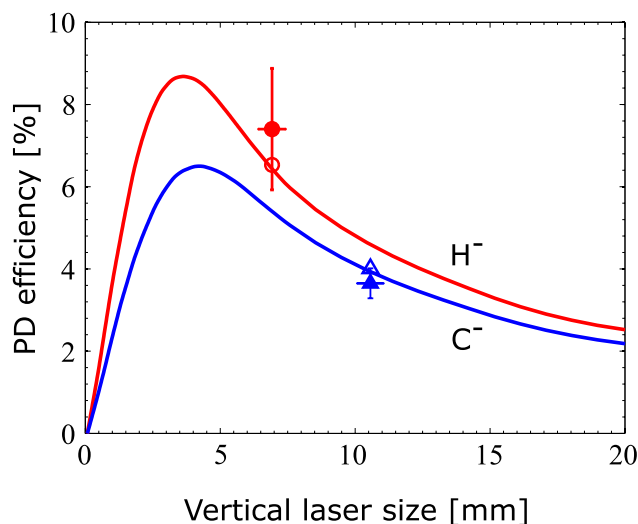


FIG. 8. Photodetachment (PD) efficiencies for 10 keV  $H^-$  (red circles) and 28 keV  $C^-$  ions (blue triangles). The solid symbols show the experimental results. The open symbols are the result of Monte Carlo simulations taking into account the ion and neutral beam profiles in the overlap region. The solid lines depict simplified calculations assuming ion beams with a fixed Gaussian profile and homogeneous cylindrical laser beams. The power of the 975-nm- and 808-nm-laser in normal operation was 1.4 kW and 1.8 kW, respectively. The vertical laser beam size is given by the distance in  $y_{laser}$  that contains 90% of the power for the Monte Carlo simulation and the experimental beam profiles, while for the simplified simulation it represents the beam diameter that contains 90% of the laser power.

the laser field were recorded, from which the photodetachment probability for each ion was calculated. We assumed cross sections of  $3.8 \times 10^{-17} \text{ cm}^2$ <sup>23</sup> for photodetachment of  $H^-$  at 975 nm and  $1.5 \times 10^{-17} \text{ cm}^2$ <sup>26</sup> for  $C^-$  at 808 nm. The simulated photodetachment efficiencies for our experimental setups are shown in Fig. 8 as hollow symbols. For the  $H^-$  and  $C^-$  beams, the Monte Carlo simulation yielded photodetachment efficiencies of 6.5% and 4.0%, respectively. Also shown in the plot are the experimentally determined efficiencies of  $\sim 7.4\%$  for  $H^-$  and  $\sim 3.7\%$  for  $C^-$  (solid symbols). The experimental values are based on measurements of the ion current reduction in the Faraday cup that collects the deflected ions downstream of the neutralization chamber.

To come to a more systematic understanding of the efficiencies for different matchings of the ion and laser beam overlap, we carried out simplified simulations that are depicted by the solid lines. In this case, we used constant Gaussian ion beam waists of 1.3 mm for  $H^-$  and 1.1 mm for  $C^-$  in the center of the overlap region, as determined for the optimal geometric transmittance of the beam through the photodetachment chamber. The laser beam was represented by a simple circular profile with a homogeneous photon density. For Fig. 8, we consistently use the 90% transmitted intensity boundary as the vertical laser beam diameter. The comparison of this simplified calculation to the more sophisticated Monte Carlo approach shows very good agreement. The simple simulation allows us to estimate the ideal vertical laser beam size for our given ion beam profiles (remember that the horizontal laser profile basically does not matter, as the laser and ion beams intersect in the horizontal plane). The simulated curve peaks at a value of 9.2% for  $H^-$  and 6.2% for  $C^-$ . This shows that we could gain an



additional factor of  $\sim 1.25$  for  $\text{H}^-$  if we could bring the laser to a smaller focus in the overlap region, while for  $\text{C}^-$ , we could gain a factor of  $\sim 1.68$ . The reason for the sub-optimal configuration in the latter case is due to the fact that the laser axes of the new 808-nm-system are rotated by  $90^\circ$  compared to the 975-nm-system, resulting in a beam profile that is larger in vertical than in horizontal direction. For optimal neutral gain, the axes of the 808-nm-system should be interchanged. In the neutral beam setup that is currently under construction at MPIK, the laser and ion beams will be intersecting in the vertical plane, to make full use of the laser power. However, for the sake of simplicity, the present measurements were carried out in the same horizontal chamber geometry as the 975-nm-laser, only the distances of the circular apertures were modified. Consequently, we expect to achieve approximately a factor of  $\sim 1.68$  gain in efficiency for  $\text{C}^-$  at the neutral beam setup at MPIK.

For our merged beams experiments,<sup>34,42–44</sup> we simultaneously measured the neutral flux exiting the photodetachment region passes through the second aperture and the reduction in the transmitted ion beam current, caused by the laser. For the neutral flux determination, we used a calibrated cup in which we recorded the secondary electron emission off a metal surface. We noticed a clear difference in the ratio of the transmitted neutral and ion currents compared to the fraction of ions that were photodetached by the laser. The reason for this difference is that the ion beam is subjected to space charge while the neutrals are not. Therefore, the ion and neutral beams have quite different emittances, with the neutral beam effectively being more collimated. That also means that a part of the ion beam that will not make it through the second aperture still contributes to neutral beam creation. We simulated this effect with extensive SIMION calculations<sup>37</sup> including beam repulsion and using the known ion beam geometry. From the difference in transmission with and without beam repulsion, we calculated an enhancement factor of 1.29 for the transmitted neutral-to-ion ratio compared to the photodetachment efficiency for  $\text{H}^-$ . This agreed very well with the measured neutral-to-ion ratio of  $\sim 9.5\%$ . For the heavier  $\text{C}^-$  system space charge effects are less pronounced and the calculated enhancement factor is 1.14. Note that this does not mean that the photodetachment is more efficient. In fact, the increased transmitted neutral-to-ion ratio is an experimental artifact of our setup, where the photodetachment occurs between the collimating apertures.

## V. CONCLUSION AND PERSPECTIVES

We have shown that photodetachment using direct diode laser stacks is an efficient technique for the creation of fast beams of neutral atoms. Neutralization efficiencies of  $\sim 7.4\%$  and  $\sim 3.7\%$  were achieved in an inclined beams configuration for  $\text{H}^-$  and  $\text{C}^-$  beams at kinetic energies of 10 keV and 28 keV. In our experimental setup, this allowed production of neutral equivalent currents of  $\sim 62$  nA and  $\sim 30$  nA for  $\text{H}^-$  and  $\text{C}^-$ , respectively. By using a small intersection angle between the ion and laser beams, we were able to increase the overlap length and boost the photodetachment efficiency by a factor of  $\sim 21$  compared to a crossed beams arrangement at right

angles. The diode laser setups that were used here provide very stable power levels and require little maintenance, which is a major advantage for neutral beam creation at complex experiments like the future neutral beamline of the Cryogenic Storage Ring (CSR)<sup>45</sup> at MPIK in Heidelberg. Our simulations show that an ideal matching of the ion and laser beam profiles would allow us to reach  $\sim 9.2\%$  photodetachment efficiency for  $\text{H}^-$  at 10 keV and  $\sim 6.2\%$  for  $\text{C}^-$  at 28 keV. It should be noted that at lower kinetic energies even higher neutralization fractions could be achieved, as the photodetachment efficiency scales with  $1/\sqrt{E_{\text{ion}}}$ . The focus of the present study has been the creation of fast well-defined neutral ground-term atomic beams for merged beams studies of astrophysical processes. However, the same technique could be applied to neutralize the majority of stable atomic anions in the periodic table.

## ACKNOWLEDGMENTS

Work at Columbia University was supported, in part, by the NSF Divisions of Chemistry and of Astronomical Sciences. A.O., F.G., and H.K. were supported by the European Research Council under Grant Agreement No. StG 307163 and by the Max Planck Society. H.B. was supported in part by the German academic exchange service DAAD. X.U. acknowledges support from the Fund for Scientific Research — FNRS and the IISN under Contract No. 4.4504.10.

- <sup>1</sup>D. H. Wooden, S. B. Charnley, and P. Ehrenfreund, "Composition and evolution of interstellar clouds," in *Comets II* (University of Arizona Press, Tucson, 2004), pp. 33–66.
- <sup>2</sup>V. Wakelam, J.-C. Loison, E. Herbst, D. Talbi, D. Quan, and F. Caralp, *Astron. Astrophys.* **495**, 513 (2009).
- <sup>3</sup>T. P. Snow and V. M. Bierbaum, *Annu. Rev. Anal. Chem.* **1**, 229 (2008).
- <sup>4</sup>X. Urbain, A. Cornet, F. Brouillard, and A. Giusti-Suzor, *Phys. Rev. Lett.* **66**, 1685 (1991).
- <sup>5</sup>J. Daranlot, M. Jorfi, C. Xie, A. Bergeat, M. Costes, P. Caubet, D. Xie, H. Guo, P. Honvault, and K. M. Hickson, *Science* **334**, 1538 (2011).
- <sup>6</sup>A. P. O'Connor, X. Urbain, J. Stützel, K. A. Miller, N. de Ruette, M. Garrido, and D. W. Savin, *Astrophys. J., Suppl. Ser.* **219**, 6 (2015).
- <sup>7</sup>L. S. Hirsch, Z. Yu, S. L. Buczkowski, T. H. Myers, and M. R. Richards-Babb, *J. Electron. Mater.* **26**, 534 (1997).
- <sup>8</sup>R. Hemsworth, H. Decamps, J. Graceffa, B. Schunke, M. Tanaka, M. Dremel, A. Tanga, H. P. L. DeEsch, F. Geli, J. Milnes *et al.*, *Nucl. Fusion* **49**, 045006 (2009).
- <sup>9</sup>M. Kavari and B. Crowley, *Fusion Eng. Des.* **85**, 745 (2010).
- <sup>10</sup>J. Fink and A. Frank, "Photodetachment of electrons from negative ions in a 200 keV deuterium beam source," UCRL-16844, Lawrence Livermore National Laboratory, 1975.
- <sup>11</sup>B. van Zyl, N. G. Utterback, and R. C. Amme, *Rev. Sci. Instrum.* **47**, 814 (1976).
- <sup>12</sup>C. C. Havener, M. S. Huq, H. F. Krause, P. A. Schulz, and R. A. Phaneuf, *Phys. Rev. A* **39**, 1725 (1989).
- <sup>13</sup>J. D. Thomas, T. J. Kvale, S. M. Z. Strasser, D. G. Seely, and C. C. Havener, *AIP Conf. Proc.* **1099**, 154 (2009).
- <sup>14</sup>H. Bruhns, H. Kreckel, D. W. Savin, D. G. Seely, and C. C. Havener, *Phys. Rev. A* **77**, 064702 (2008).
- <sup>15</sup>I. N. Draganić, D. G. Seely, and C. C. Havener, *Phys. Rev. A* **83**, 054701 (2011).
- <sup>16</sup>T. Andersen, H. K. Haugen, and H. Hotop, *J. Phys. Chem. Ref. Data* **28**, 1511 (1999).
- <sup>17</sup>T. Andersen, *Phys. Rep.* **394**, 157 (2004).
- <sup>18</sup>E. P. Wigner, *Phys. Rev.* **73**, 1002 (1948).
- <sup>19</sup>M. Scheer, R. C. Bilodeau, C. A. Brodie, and H. K. Haugen, *Phys. Rev. A* **58**, 2844 (1998).
- <sup>20</sup>T. Takao, S. Jinno, K. Hanada, M. Goto, K. Oshikiri, K. Okuno, H. Tanuma, T. Azuma, and H. Shiromaru, *J. Phys.: Conf. Ser.* **88**, 012044 (2007).
- <sup>21</sup>Z. Felfli, A. Z. Msezane, and D. Sokolovski, *Phys. Rev. A* **79**, 012714 (2009).

- <sup>22</sup>S. J. Smith and D. S. Burch, *Phys. Rev. Lett.* **2**, 165 (1959).
- <sup>23</sup>M. Génévriez and X. Urbain, *Phys. Rev. A* **91**, 033403 (2015).
- <sup>24</sup>M. Venuti and P. Declava, *J. Phys. B: At., Mol. Opt. Phys.* **30**, 4839 (1997).
- <sup>25</sup>D. Feldmann, *Chem. Phys. Lett.* **47**, 338 (1977).
- <sup>26</sup>M. L. Seman and L. M. Branscomb, *Phys. Rev.* **125**, 1602 (1962).
- <sup>27</sup>L. M. Branscomb, S. J. Smith, and G. Tisone, *J. Chem. Phys.* **43**, 2906 (1965).
- <sup>28</sup>P. Hlavenka, R. Otto, S. Trippel, J. Mikosch, M. Weidemüller, and R. Wester, *J. Chem. Phys.* **130**, 061105 (2009).
- <sup>29</sup>F. Dorsch and F. X. Daiminger, *Proc. SPIE* **3628**, 56–63 (1999).
- <sup>30</sup>H. Sun, *A Practical Guide to Handling Laser Diode Beams* (SpringerBriefs in Physics, Dordrecht, Heidelberg, New York, London, 2015).
- <sup>31</sup>G. F. Marshall and G. E. Stutz, *Handbook of Optical and Laser Scanning* (CRC Press, 2011).
- <sup>32</sup>See <http://www.zemax.com> for information on the optics studio design software.
- <sup>33</sup>J. Wang, Z. Yuan, L. Kang, K. Yang, Y. Zhang, and X. Liu, in *59th Electronic Components and Technology Conference (ECTC)* (IEEE, 2009), pp. 837–842, .
- <sup>34</sup>H. Kreckel, H. Bruhns, M. Čížek, S. C. O. Glover, K. A. Miller, X. Urbain, and D. W. Savin, *Science* **329**, 69 (2010).
- <sup>35</sup>H. Bruhns, H. Kreckel, K. Miller, M. Lestinsky, B. Seredyuk, W. Mitthumsiri, B. L. Schmitt, M. Schnell, X. Urbain, M. L. Rappaport *et al.*, *Rev. Sci. Instrum.* **81**, 013112 (2010).
- <sup>36</sup>H. Kreckel, H. Bruhns, K. A. Miller, E. Wahlin, A. Davis, S. Hockh, and D. W. Savin, *Rev. Sci. Instrum.* **81**, 063304 (2010).
- <sup>37</sup>SIMION 3D 8.0, <http://www.simion.com>, 2008.
- <sup>38</sup>F. Brouillard and W. Claeys, *Physics of Ion-Ion and Electron-Ion Collisions* (Plenum Press, New York, 1983), pp. 415–459.
- <sup>39</sup>W. Aberth and J. R. Peterson, *Rev. Sci. Instrum.* **38**, 745 (1967).
- <sup>40</sup>G. Doucas, *Int. J. Mass Spectrom. Ion Phys.* **25**, 71 (1977).
- <sup>41</sup>G. Doucas, *Rev. Phys. Appl.* **12**, 1465 (1977).
- <sup>42</sup>H. Bruhns, H. Kreckel, K. A. Miller, X. Urbain, and D. W. Savin, *Phys. Rev. A* **82**, 042708 (2010).
- <sup>43</sup>K. A. Miller, H. Bruhns, J. Eliášek, M. Čížek, H. Kreckel, X. Urbain, and D. W. Savin, *Phys. Rev. A* **84**, 052709 (2011).
- <sup>44</sup>K. A. Miller, H. Bruhns, M. Čížek, J. Eliášek, R. Cabrera-Trujillo, H. Kreckel, A. P. O'Connor, X. Urbain, and D. W. Savin, *Phys. Rev. A* **86**, 032714 (2012).
- <sup>45</sup>R. von Hahn, F. Berg, K. Blaum, J. R. C. Lopez-Urrutia, F. Fellenberger, M. Froese, M. Grieser, C. Krantz, K.-U. Kühnel, M. Lange *et al.*, *Nucl. Instrum. Methods Phys. Res., Sect. B* **269**, 2871 (2011).